

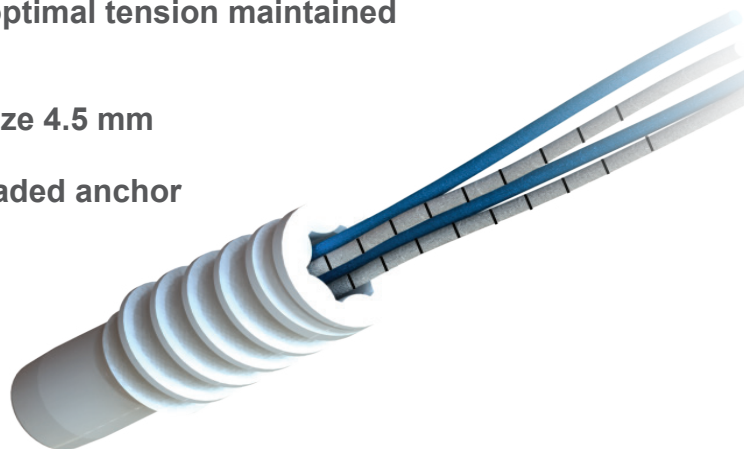
# Rotator cuff repair

## Bioabsorbable fixation systems and flat suture

**FIXIT<sup>®</sup>**

Pre-loaded absorbable anchor

- ▶ Easy insertion, optimal tension maintained on the suture
- ▶ Available from size 4.5 mm
- ▶ Absorbable threaded anchor



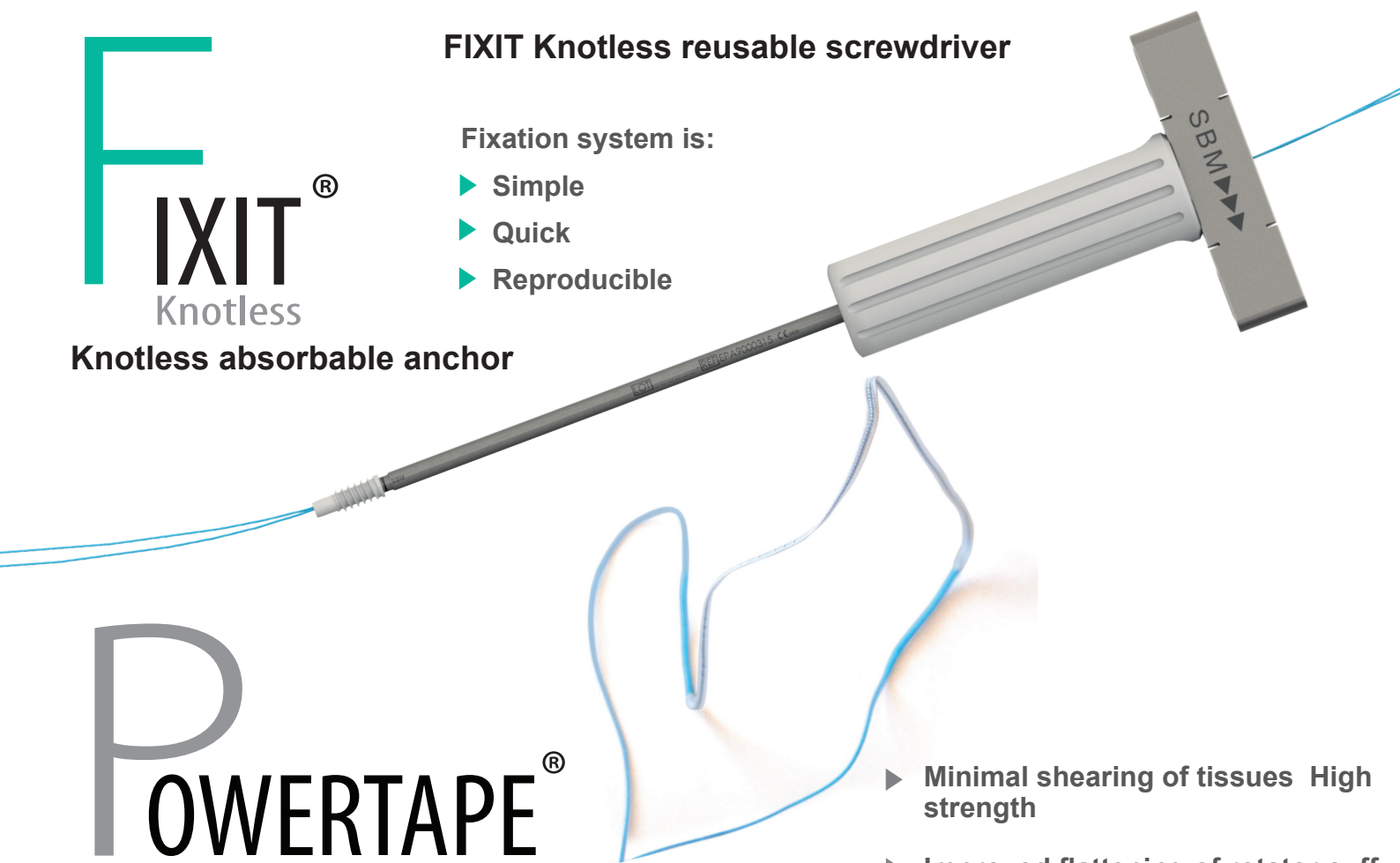
**FIXIT<sup>®</sup>**  
Knotless

Knotless absorbable anchor

### FIXIT Knotless reusable screwdriver

Fixation system is:

- ▶ Simple
- ▶ Quick
- ▶ Reproducible



**POWER TAPE<sup>®</sup>**

Non absorbable Polyethylene flat suture

- ▶ Minimal shearing of tissues High strength
- ▶ Improved flattening of rotator cuff over the humerus
- ▶ Improved healing

# Osteoconductive, bioabsorbable and high-strength...

FIXIT® is a line of ready-to-use anchors for tendinous tissue fixation in arthroscopic rotator cuff repair. Available in three different sizes, each with sutures and knotless versions, this system was designed to be quick and easy to use.

Made exclusively in Duosorb®, a biocomposite material, these osteoconductive and bioabsorbable anchors offer remarkable mechanical performances when compared with other bioabsorbable anchors on the market. The FIXIT® system promotes bone healing and facilitates revision surgery. This adaptable high performance system is the solution of choice for all your arthroscopic rotator cuff repairs, no matter what technique you use.

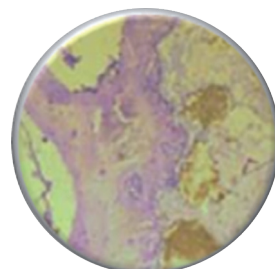
## Bone healing

### Osteoconductive material <sup>1</sup>

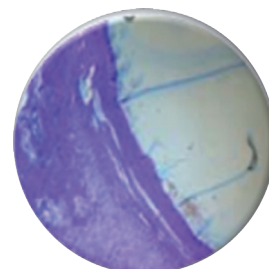
FIXIT® anchors are made with Duosorb®, a biocomposite material composed of: **30%  $\beta$ -TCP** and **70% PLDLLA**. This balance between strength and elasticity makes Duosorb® both osteoconductive and bioabsorbable, and its high  $\beta$ -TCP content limits inflammatory responses.

### Atraumatic design

FIXIT® and FIXIT® KNOTLESS systems have atraumatic threaded anchors that can be reliably inserted. The eyelet is hidden inside the FIXIT® anchors which avoids friction with sutures and makes the device stronger.



**Duosorb®**  
Toluidine blue x400 - 3 months



**Pure PLDLLA**  
Toluidine blue x400 – 1 week

## Quick and reproducible

### FIXIT®

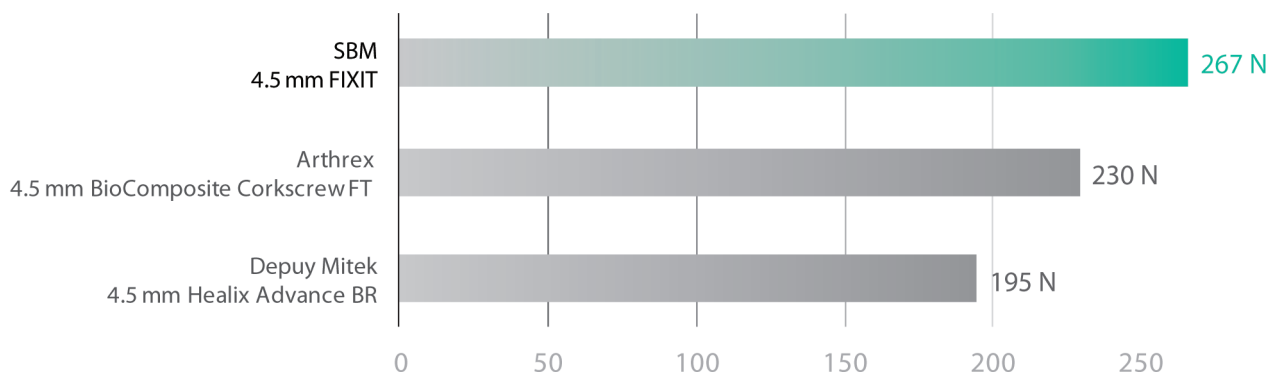
FIXIT® anchors are pre-assembled with two UHMWPE suture, and pre-loaded on a disposable screwdriver for tensioning the sutures. FIXIT® anchors are specially designed to make their insertion easy thanks to a conical nose perfect for locating the pilot-hole.

### FIXIT® KNOTLESS

The knotless version of the FIXIT® anchors are used with a non-disposable insertion pin which makes passing the sutures through the anchor and the screwdriver quick and easy. In addition, the sutures allow good interference and the design of the anchor facilitates its insertion thanks to the conical nose which makes finding the pilot hole much easier.

## High-strength <sup>2</sup>

### Average fixation strength of bioabsorbable anchors \*



<sup>1</sup> Biological performance of a new  $\beta$ -TCP/PLLA composite material for applications in spine surgery: In vitro and in vivo studies, AUNOBLÉ S., CLEMENT D., FRAYSSINET P., HARMAND M-F., LE HUEC J-C. Journal of Biomedical Materials Research, Part A, Art. 30749, 1-7, 2006.

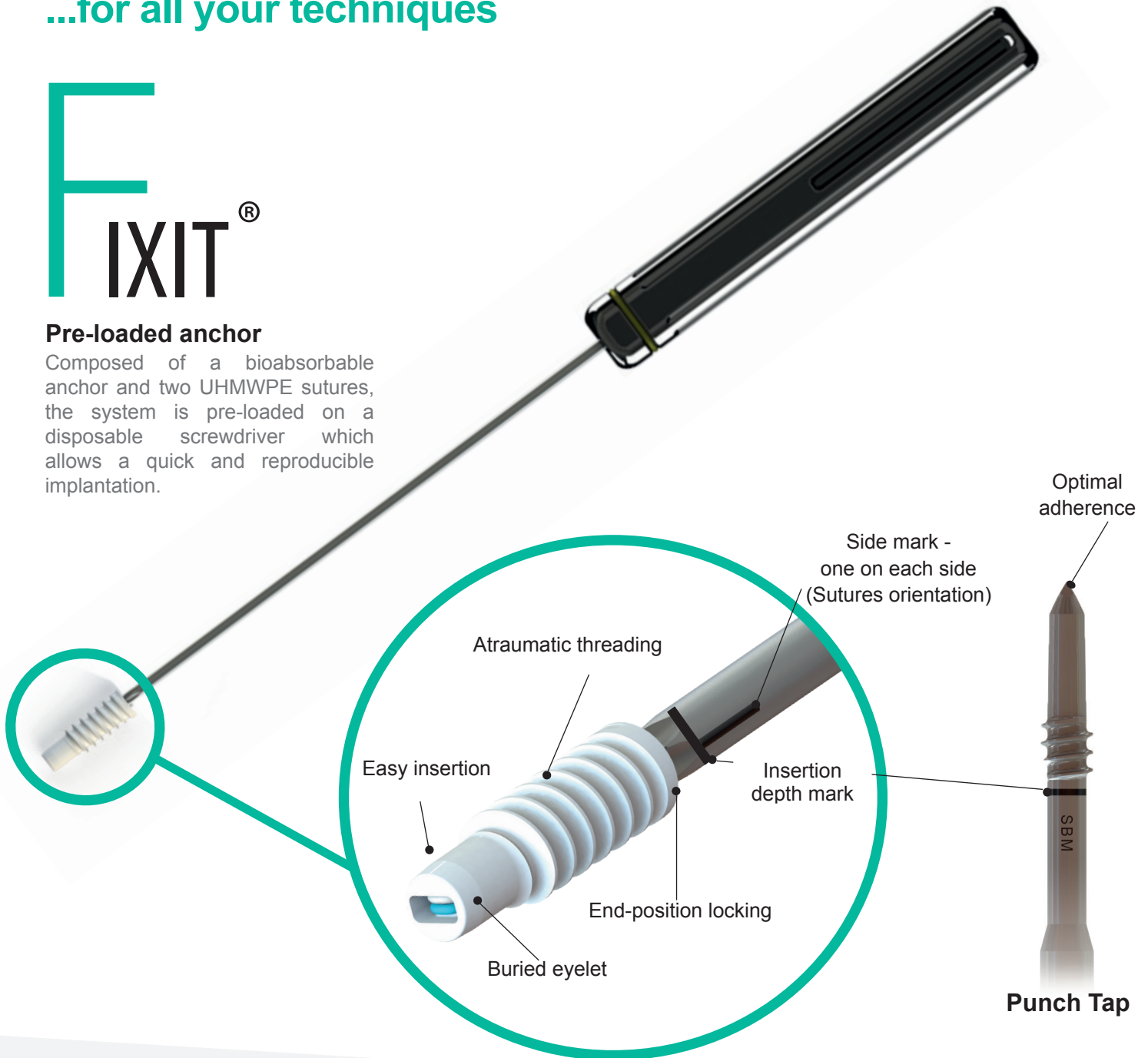
<sup>2</sup> Data on file, SBM.

...for all your techniques

# FIXIT<sup>®</sup>

## Pre-loaded anchor

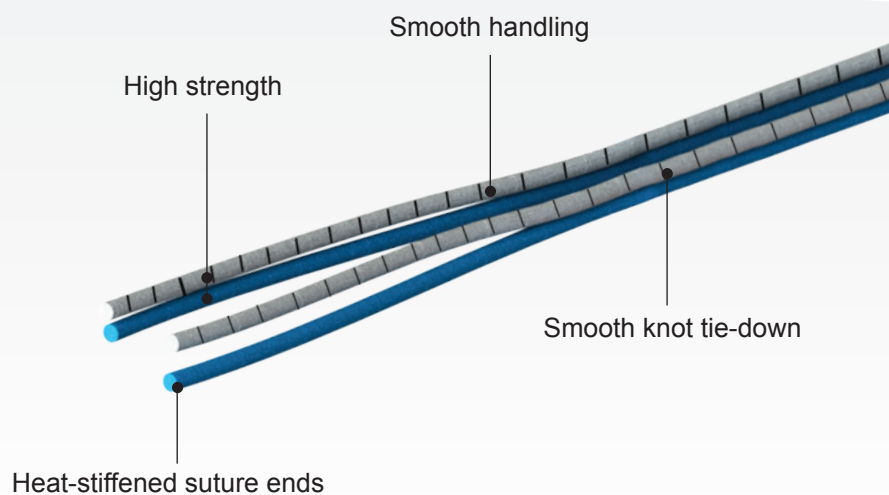
Composed of a bioabsorbable anchor and two UHMWPE sutures, the system is pre-loaded on a disposable screwdriver which allows a quick and reproducible implantation.



Punch Tap

## UHMWPE sutures

FIXIT<sup>®</sup> size USP #2 sutures are incredibly strong latest-generation sutures, made of UHMWPE (Ultra High Molecular Weight PolyEthylene).

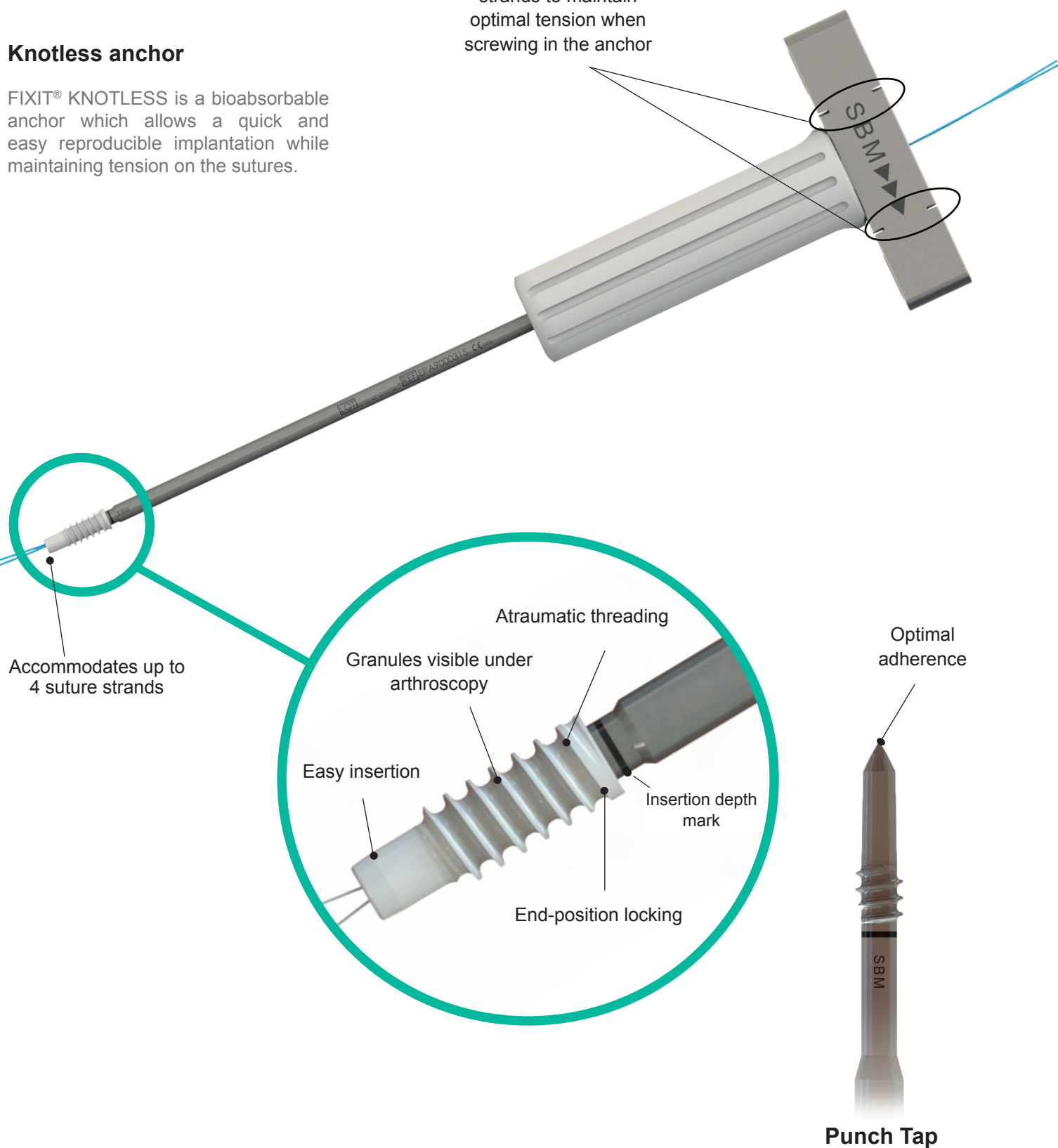


# FIXIT<sup>®</sup> Knotless

## Knotless anchor

FIXIT<sup>®</sup> KNOTLESS is a bioabsorbable anchor which allows a quick and easy reproducible implantation while maintaining tension on the sutures.

Slots for tightly wedging the strands to maintain optimal tension when screwing in the anchor



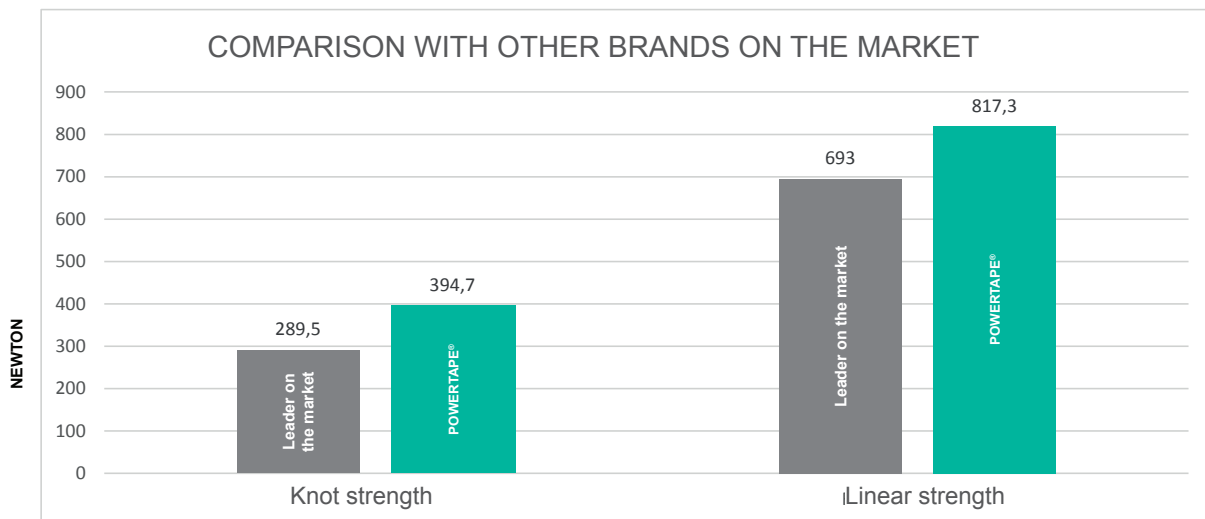
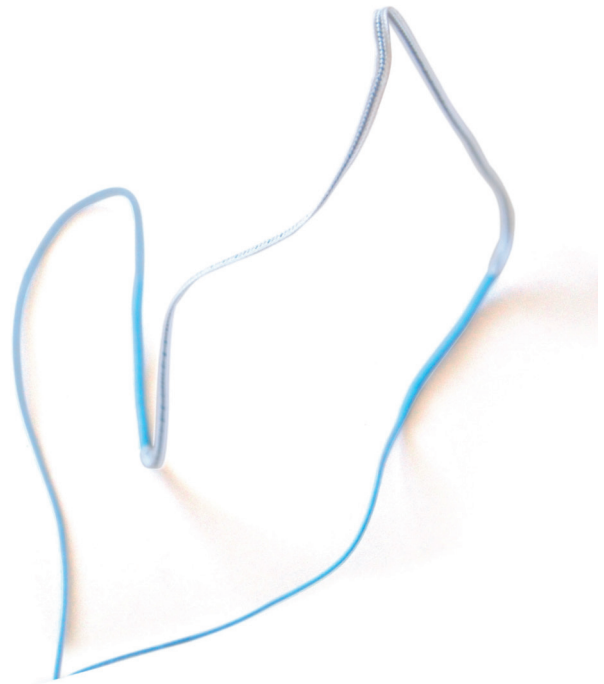
# POWERTAPE®

## Polyethylene sutures

The POWERTAPE® suture is made of polyethylene with a flat central portion that resembles a tape.

This flat part helps better distribute the forces exerted on the tissues while guaranteeing their integrity.

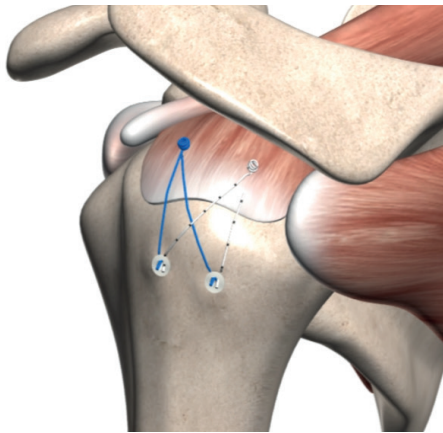
- ▶ Size USP 2 / Thickness 5
- ▶ Total length: 99 cm
- ▶ Width of tape: 2 mm
- ▶ Length of tape: 19 cm



The POWERTAPE® suture associated with the FIXIT® Knotless anchor is mainly used in the following surgical techniques:

# Surgical techniques

## Double row with rounded sutures



Products used:

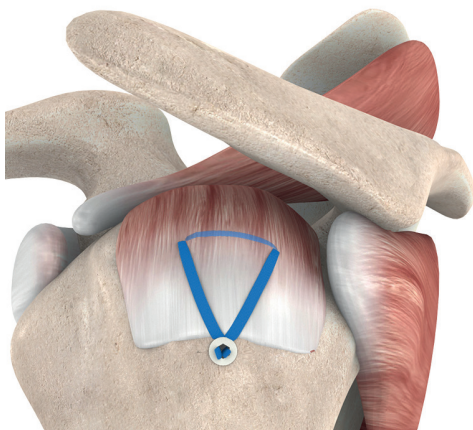
▶ 2 **F**IXIT<sup>®</sup>

▶ 2 **F**IXIT<sup>®</sup>  
Knotless

Advantages of this technique:

- ▶ Reproducible
- ▶ Accommodates up to 4 suture strands

## Single row



Products used:

▶ 1 **P**OWERTAPE<sup>®</sup>

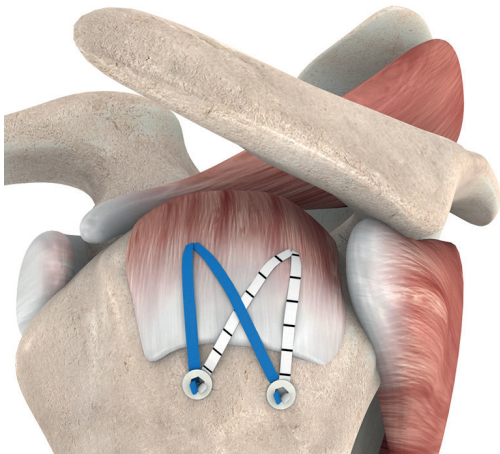
▶ 1 **F**IXIT<sup>®</sup>  
Knotless

Advantages of this technique:

- ▶ Only one anchor is required
- ▶ Quick
- ▶ Anatomical fixation at the natural insertion of the rotator cuff Minimal
- ▶ Shearing of tissues with POWERTAPE<sup>®</sup>
- ▶ Knotless
- ▶ Improved interference fixation stability



## Double row with tape sutures



### Products used:

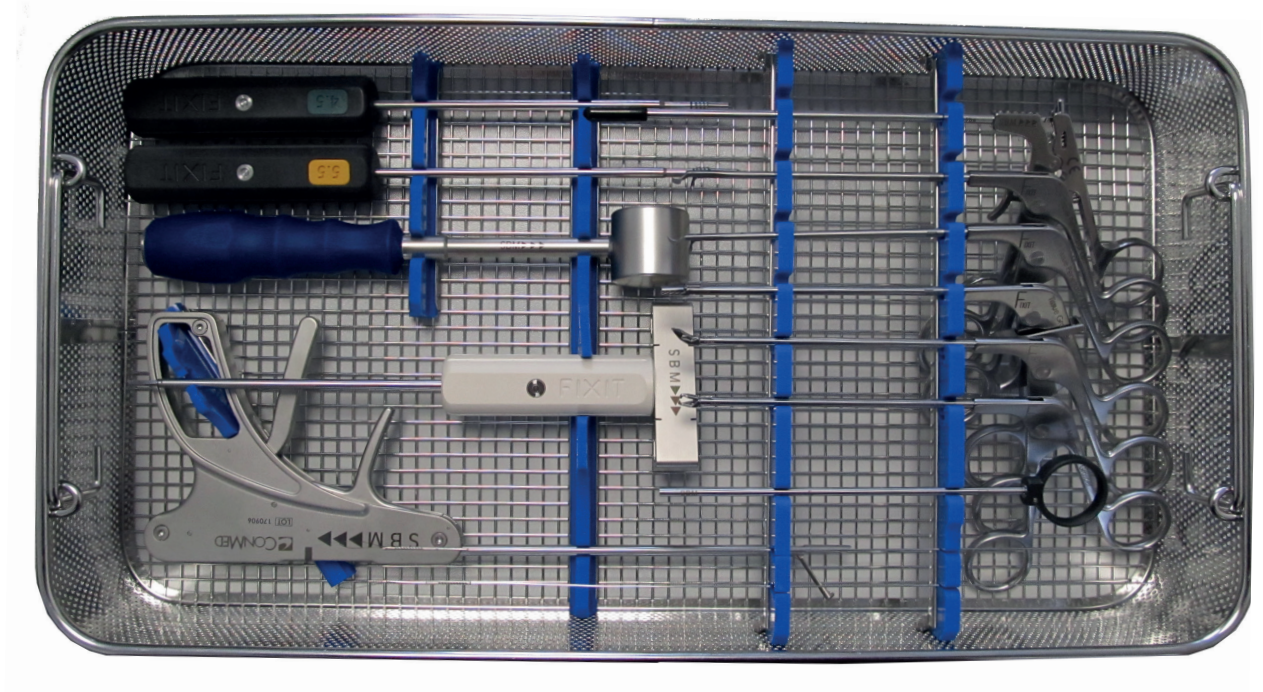
- ▶ 2 POWER TAPE®
- ▶ 4 FIXIT®  
Knotless

### Advantages of this technique:

- ▶ Minimal shearing of tissues with POWER TAPE®  
Knotless
- ▶ Improved interference
- ▶ fixation stability

# Instrumentation

## FIXIT® instruments



Complete FIXIT® basket - 1st + 2nd row with automatic grasper  
EPA9000004



Punch tap  
For anchor ø 4.5 - EPA9000240



Punch tap  
For anchors ø 5.5 & 6.5 mm - EPA9000241



FIXIT® mallet  
EPA9000247





Tissue Grasper  
EPAGR00074



Penetrating Grasper 30° Up  
EPAGR00174



Clever Hook Right  
328332bs



Clever Hook Left  
328342bs



Suture Manipulator Grasper  
EPAGR00274



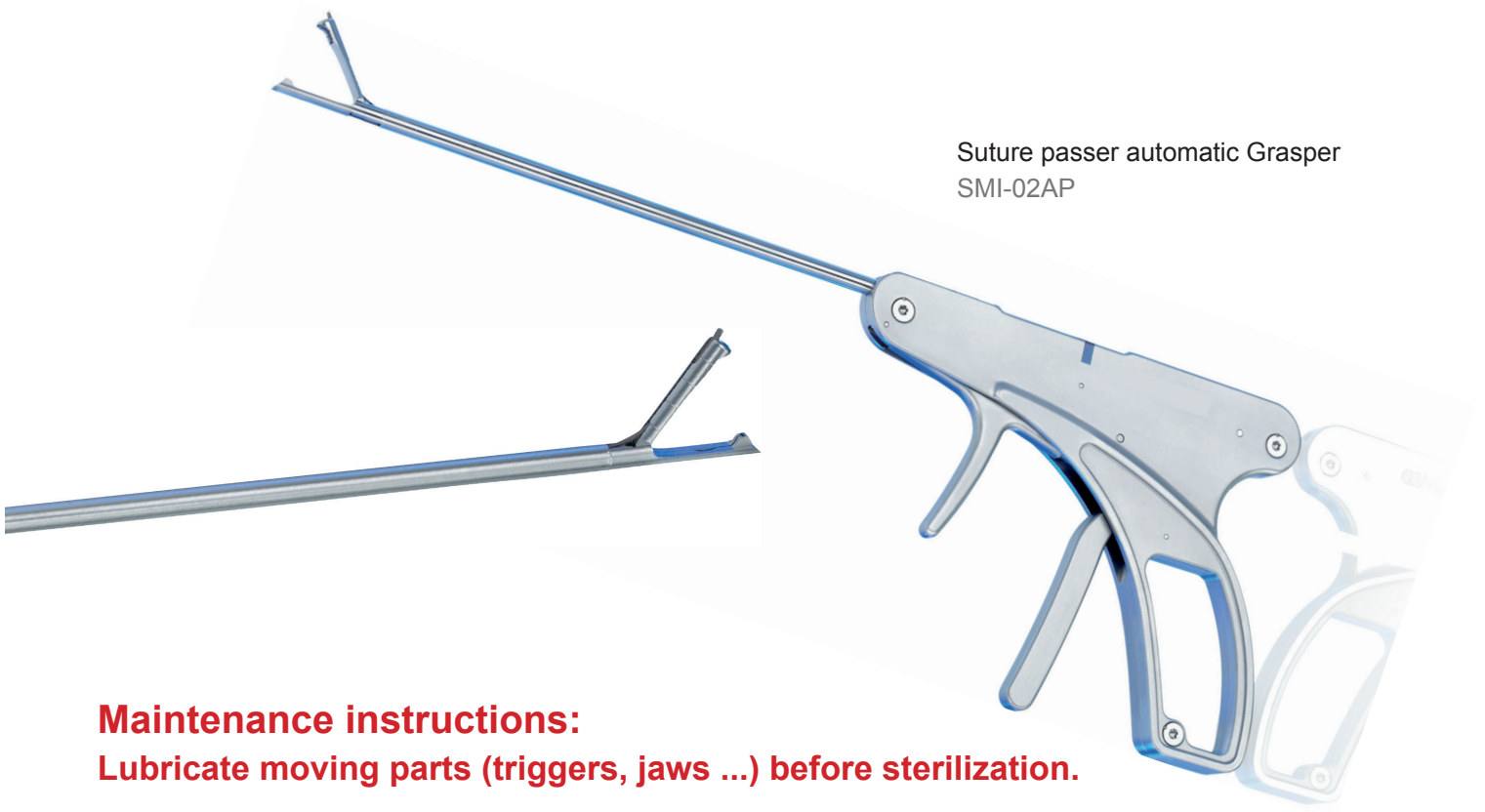
Suture Cutter  
231200BS



Knot pusher  
EPAKN00074

## OPTION

Suture passer automatic Grasper  
SMI-02AP

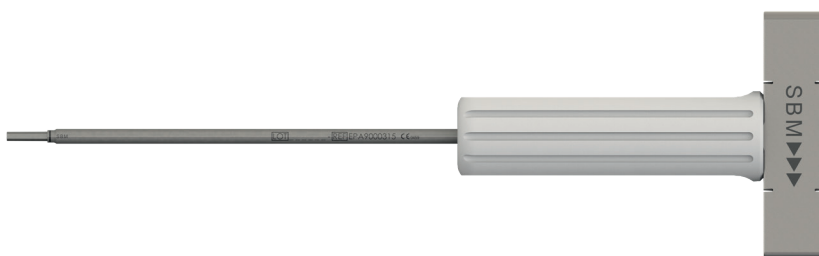


### Maintenance instructions:

Lubricate moving parts (triggers, jaws ...) before sterilization.

Box of 5 automatic grasper disposable Needles  
SMI-02N

## SECOND Row



FIXIT® knotless screwdriver  
**NOT DISPOSABLE**  
EPA9000315



Suture retriever pin  
**NOT DISPOSABLE**  
EPA9000303



## Ordering information

### FIXIT® bioabsorbable threaded anchors

<b>Codes</b>	<b>Designation</b>	<b>Packaging</b>
EPA0047CLA	FIXIT® Ø 4.5 mm threaded anchor mounted on screwdriver	1
EPA0055CLA	FIXIT® Ø 5.5 mm threaded anchor mounted on screwdriver	1
EPA0065CLA	FIXIT® Ø 6.5 mm threaded anchor mounted on screwdriver	1

### FIXIT® KNOTLESS bioabsorbable threaded anchors

<b>Codes</b>	<b>Designation</b>	<b>Packaging</b>
EPAV245KNO	FIXIT® knotless threaded anchor single interference - Ø 4.5	1
EPAV255KNO	FIXIT® knotless threaded anchor single interference - Ø 5.5	1
EPAV265KNO	FIXIT® knotless threaded anchor single interference - Ø 6.5	1

### POWERTAPE® non-absorbable surgical flat suture for rotator cuff repair

<b>Références</b>	<b>Désignation</b>	<b>Conditionnement</b>
TAPRPBB001	POWERTAPE® non-absorbable surgical flat suture - BLUE/BLEU W 2mm L 99 cm	1
TAPRPBN001	POWERTAPE® non-absorbable surgical flat suture - WHITE/BLACK W 2mm L 99 cm	1

### FIXIT® instruments for rotator cuff repair

<b>Codes</b>	<b>Designation</b>	<b>In the basket</b>
EPA9000240	FIXIT® punch tap - Ø 4.5 mm	1
EPA9000241	FIXIT® punch tap - Ø 5.5 mm and Ø 6.5 mm	1
EPA9000247	FIXIT® mallet	1
231200BS	Suture Cutter	1
EPAGR00074	Tissue Grasper	1
EPAGR00274	Suture Manipulator Grasper	1
328332bs	Clever Hook Right	1
328342bs	Clever Hook Left	1
EPAGR00174	Penetrating grasper 30° up	1
EPAKN00074	Knot pusher	1
EPA9000101	FIXIT® stainless steel basket with silicones	1
EPA9000201	FIXIT® stainless steel basket lid	1
EPA9000001	Complete FIXIT® basket - 1st row	

### FIXIT® Knotless specific instrumentation

<b>Codes</b>	<b>Designation</b>	<b>In the basket</b>
EPA9000315	FIXIT® knotless screwdriver	1
EPA9000303	Suture retriever pin	2
EPA9000002	Complete FIXIT® basket - 1st + 2nd row	

### Optional FIXIT® instruments for rotator cuff repair

<b>Codes</b>	<b>Designation</b>	<b>In the basket</b>
SMI-02AP	Suture passer automatic grasper	1
EPA9000003	Complete FIXIT® basket - 1st row with automatic grasper	
EPA9000004	Complete FIXIT® basket - 1st + 2nd row with automatic grasper	

### CONSUMABLE

<b>Codes</b>	<b>Designation</b>	<b>Packaging</b>
SMI-02N	Box of 5 automatic grasper disposable Needles	1

**SBM**

Science & Bio Materials

CE  
0459

**G**  
MED  
ISO 13485



Carefully read the instructions for use that comes with the medical device or labeling provided to medical professionals. Class III devices.  
Document not legally binding - Can be modified without prior notice.  
Manufactured by SBM © 2015. Ref : MGEPBREN- v1.200120

**S.B.M. SAS**

ZI du Monge  
65100 LOURDES  
FRANCE  
Phone: (+33) 5 62 42 32 12  
Fax: (+33) 5 62 42 32 52  
www.sbm-france.com